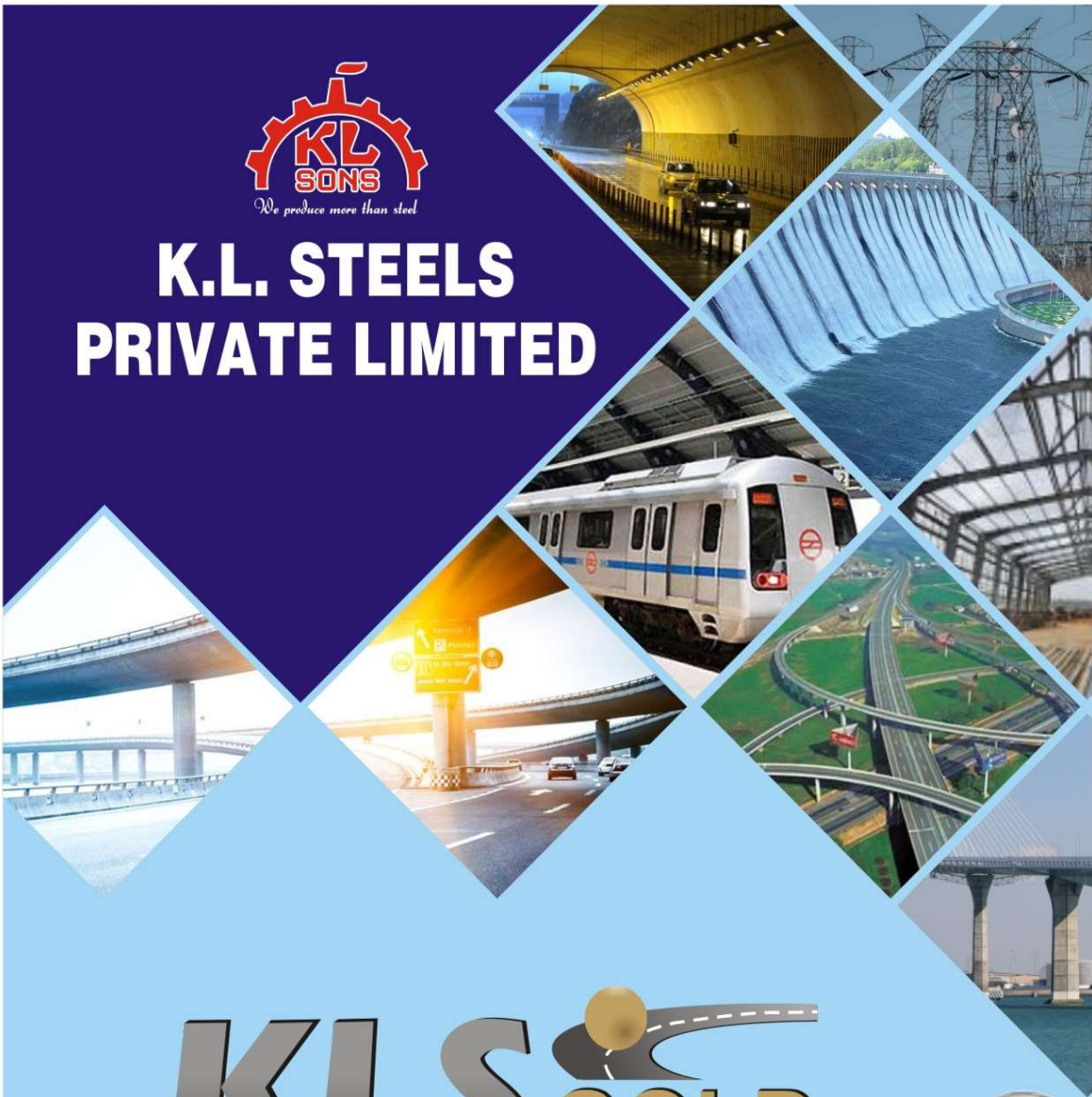
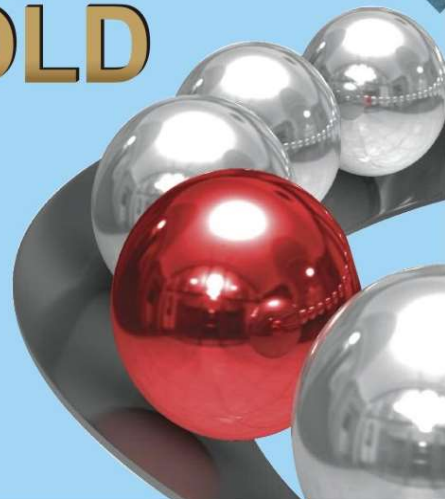




K.L. STEELS PRIVATE LIMITED



KLS  **GOLD**



THE K.L. SONS NETWORK



KLS GOLD





**IS YOUR PROJECT & FAMILY AT RISK?
USE KLS GOLD & SECURE YOUR FAMILY.**

Founded in 1984.

An ISO 9001:2015 Certified staffing company.

One of the largest structural steel producers.

Awarded by The Hon'ble President of India.

MOU with SAIL for blooms.

PRODUCTS

GIRDER | CHANNEL | ANGLE

APPROVED BY



WHY KLS GOLD?

- Earthquake Resistance.
- Sulphur (S) Phosphorus (Ph) <0.045%.
- German Technology for Quality Testing.
- 100% Pure IS 2062 otherwise ready to pay penalty of Rs. 10 Lakh.
- 100% traceability of the Product.



CONTACT US: 0120-4198480/7291992004, TOLL FREE NO. 18001037570

MAIL ID: mrc@klsons.in, WEBSITE: KLSTEELS.IN,

FOLLOW ON FACEBOOK: KL STEELS PRIVATE LIMITED.

BEST PRICE | BEST QUALITY | BEST SERVICE S



ABOUT K. L. STEELS :-

K. L. Steels is amongst India's most reliable and leading manufacturers of high quality products such as channels and girders made up of high grade carbon steel, alloy steel, stainless steel and duplex steel. Besides, KL Steels also offers customized products using special steel or alloy as per the raw materials specifications shared by the client.

Since 1984, the thirty years of successful journey reflect sheer commitment and dedication of the organization towards delivering highly durable and excellent products. KL Steels' advance and human friendly production processes are the part of its green initiative to protect the environment. The lush green work ambiance refreshes the mind & soul of its people and visitors. The organization stands taut pillars, these are robust infrastructure, strict quality norms, motivated people and tacit relationship with the customers.

K.L. Steels has been focusing on gamering scientific innovations in the operational processes. The organisation intensively invested in plants and machineries to deliver quality products.

The unmatched quality and strength of KL Steels' wide range of products helped the brand to earn enviable reputation and recognition by public sector enterprises. Our warm relationship with the customers, suppliers and employees is a driving force for the organization to meet the demands and expectations of industries as well as people.





QUALITY POLICY

We, at K. L. Steels Private Limited, are committed to be the market leader in Steel Sections through incorporating quality principles:

SIMPLICITY

To provide a simple and clear communication.

QUALITY PROCESS

To achieve and sustain quality with the application of quality tools.

CO-OPERATION

To work with team spirit.

AVOID WASTAGE

To practice value added lean concepts.

CUSTOMER SATISFACTION

To consistently exceed customer expectations.

SAFETY & SECURITY

To attain no accident status.

A handwritten signature in blue ink, reading 'Raj Bardeja'.

Raj Bardeja
(Managing Director)





VISION OF **FOUNDER**



*L*egacies we received from the Honourable Founder, stalwarts and stewards of the organisation are the soul of KL Steels' value and culture system. The 30 golden years of the organisation endowed us with some valuable legacies along with growth, recognition and achievements.

We produce more than Steel because apart from producing steel, we give our esteemed clients, the most valuable thing- a satisfaction of getting a quality product with the best competitive prices in the market.

The story began 58 years back with setting up of a small plant at Mandi Gobindgarh in Punjab. Now, with our relentless efforts and sincerity, that small sapling has become a big tree with its branches across the country. These other branches under the flagship banner of K L Steels (P) Ltd are K L Concast, Raj Steel Rolling Mill and Adarsh Steel.

Our vision is to expand, diversify and make a mark in achieving milestones, with a promise of giving a healthy competition to our competitors in the trade.

I, personally wish to see K L Group converting into a Strong and Integrated K L Family .

Kanhaya Lal Bardeja
(Founder)





FROM THE DESK OF **MANAGING DIRECTOR**



W

here there is no vision, people perish.

Thus, we at K L Steels, are working tirelessly to realize a vision that is to be a leader in the Industry. Our commitment is towards producing quality products for general engineering purpose, through advance technology incorporated in our state-of-art steel plant

Now, K L Steels Private Limited can boast of the fact that it is the only manufacturer in north India with its production capacity crossing over 1,50,000 tonnes per annum (TPA) With high Quality Steel blooms of medium manganese and low sulphur - phosphorus, we are surging ahead.

Our focus is towards giving the best services along with quality material at competitive prices. Now, with our expansion plan to make a mark in transmission industry, we wish to reiterate our commitment towards our vision and philosophy.

We grow with the organization and I firmly believe in it. Thus, we at K L Steels, envisage an ambience in which our human resources develop along with the growth in technology.

A handwritten signature in black ink, appearing to read 'Raj Bardeja'.

Raj Bardeja
(Managing Director)





Dear sir (s)

It is with great pride & pleasure to present digitally matched IS:2062(E-250A) quality product “**KLSGOLD**” Beams and Channels with guaranteed quality in all business domains :-

Quality :- Steel Beams and channels are used to bear heavy load and jerks hence directly related to the human and billion dollar projects' life. It is the foremost responsibility of **KL STEELS** to match specification digitally as well as there should be no space for subjective discussion or explanation or manipulation regarding chemical composition primarily percentage of *sulphur and phosphorus which must not be more than 0.045.*

Price :- **KL STEELS** doctrine is to match worlds best quality at minimum cost by applying all visible and invisible cost cutting parameters. We match quality of “High priced other branded steel products” and at the same time pass on cost cutting benefits to our esteemed customers which varies 5 to 10% on lower side.

Customer services :- Culture of the **KL STEELS** is to “consistently exceed customer's expectations” and to adjust ourselves to the culture of our valued customers. Our customer service team would always remain in touch with your good self in terms of service before, during and after a purchase.



SOCIAL RESPONSIBILITY



School Gobind Garh Public School



School Gobind Garh Public School



Ganga Mata Charitable Hospital



Ganga Mata Charitable Hospital



Kanhaiyalal Charitable Trust



Seeta Devi Free Dispensary



Mandi Gobindgarh Dharamshala



QUALITY / SPECIAL FEATURE

We have sound infrastructure capable of producing 1,50,000 t.p.a steel beams and channels. The manufacturing plant includes two mills. One engineering workshop apart from well equipped laboratory. Quality is the outcome of ongoing manufacturing process which is strictly monitored at all stages. We conduct in house tensile strength test to ensure only top grade material reaches the field. Where required by the relevant construction rules, products are pressure tested before final acceptance.

The company caters to a wide gamut of customers in india and abroad. The intrinsic strength of the company such as low operating costs, special Organizational culture and good profitability has been widely appreciated and has helped the company grow to its present status. Raw material used by us is high quality steel containing medium Maganese and low sulphur and Phosphorous. Sulphur and phosphorous are impurities of steel. Sulphur forms a network at the grains boundaries of steel This constituent has a low melting point and causes a lack of cohesion between the grains of the steel when it is hot worked. The property of being weak at high temperature is known as hot shortness. High Sulphur and high Phosphorus (0.09 to 0.13%) is not satisfactory for applications requiring resistance to shock.

Material Produced at K L Steels is 100% free from impurities and high in strength and with shock absorbing properties.

PLANT AND MACHINERY



Our foremost motive of producing a product most efficiently effectively and of the highest quality is supported by the most sophisticated machinery there is to offer, which helps us to achieve our goals. Thus we use the following machinery and equipments.

ROLLING MILL: Automatic continuous type high precision Rolling mill capable to produce Quality product in term of Dimensions, mass and finishing.

FURNACE: We have a very high capacity furnace which is fitted with temperature control system.

POWER BACKUP: We have 100% power backup to ensure continuous and regular production.

CRANE: All our material is handled with crane to ensure the product does not bend and the quality is not compromised.

STRAIGHTENING MACHINE: Which helps to straighten our product.

HOT SAW MACHINE: This helps us in accurate, faster and smoother cutting of the product.

FOUR WAY COLLING BED: For the finished product which ensures proper cooling, which helps to maintain product's Properties and keep it straight.



LAB AND TESTING FACILITY

In our business it becomes essential to test the authenticity and the quality of the raw material as well as the finished Product, thus we have the following lab and testing facilities to help us understand the product better.



UNIVERSAL TEST MACHINE : Which helps us to determine the yield strength, tensile strength and the elongation of the product.

IMPACT TEST MACHINE: This helps us to carryout charpy test.

COMBUSTION GAS ANALYSER: This helps us to determine the level and composition of the combustion gas.

LASER THERMOMETER: This instrument helps us to check the temperature of the furnace, through laser system.

SPECTROMETER : This helps us to know the chemical composition of any metal whether raw material or finished product, which helps to determine the level of quality of the product. Foundry Master (spectrometer) has been imported from Germany and is used to do fast and accurate chemical analysis test.



RANGE OF PRODUCTS

The strength, durability and accuracy has established our products as best as quality product in the market. Under the dynamic leadership & command of Shri SETH KANHAYA LAL JI (a recipient of " UDYOGA PATRA" award from the Hon' ble President of India for his excellence, achievements and contributions as a self made industrialist for the development of the country) the Group is one of the fastest growing industrial houses with undisputed leadership in forward integration. Because of its relentless pursuit of excellence and aggressive. The group is witnessing spectacular success since its inception. The credibility that our products enjoy in market is due to our motto "Quality that Commands."

Our products & their area of usage:

1. STRUCTURAL SECTIONS

Joists, Channels, H-Beams, Sectional Column, W- Beams, Narrow Parallel Beams, Wide Parallel Beam.

APPLICATION: • Petrochemical • Civil Constructions

• Turnkey Projects • Railways • Industrial Sheds • Refineries

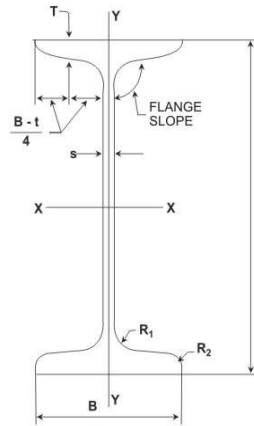
• Heavy Equipments • Material Handling • Fabrications and Many more





GRADE AND SPECIFICATIONS

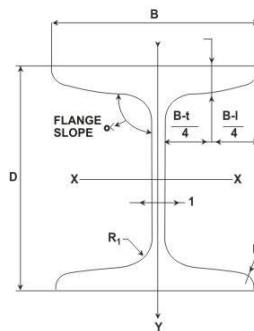
Our Company manufactures products from tested quality Blooms & Billets. The use of such Raw Material from reliable source guarantees a balanced Chemical Composition and uniform quality of high order. Our ranges of product are:



I-Beam as per 2062 (IS 808)

Designation (1)	Mass M Kg/m (2)	Sectional Area, a cm ² (3)	Dimensions						
			D mm (4)	B mm (5)	t mm (6)	T mm (7)	Flange Slope ° Deg (8)	R ₁ mm (9)	R ₂ mm (10)
MB 125	13.3	17.0	125.0	70.0	5.0	8.0	98	9.0	4.5
MB-150	15.0	19.1	150.0	75.0	5.0	8.0	98	9.0	4.5
MB-175	19.6	25.0	175.0	85.0	5.8	9.0	98	10.0	5.0
MB-250	37.3	47.5	250.0	125.0	6.9	12.5	98	13.0	6.5
MB-300	46.0	58.6	300.0	140.0	7.7	13.1	98	14.0	7.0
MB-350	52.4	66.7	350.0	140.0	8.1	14.2	98	14.0	7.0
MB-400	61.5	78.4	400.0	140.0	8.9	16.0	98	14.0	7.0
MB-450	72.4	92.2	450.0	150.0	9.4	17.4	98	15.0	7.5
MB-500	86.9	111.0	500.0	180.0	10.2	17.2	98	17.0	8.5
MB-600	123.0	156.0	600.0	210.0	12.0	20.3	98	20.0	10.0

I Beam as per 2062 (IS 808)

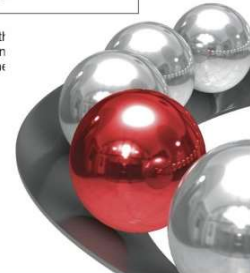


H-Beam ISHB ISSC as per 2062 (IS 808)

Designation (1)	Mass M (2)	Sectional Area, a cm ² (3)	Dimensions						
			D mm (4)	B mm (5)	t mm (6)	T mm (7)	Flange Slope, Max ° deg (8)	R ₁ mm (9)	R ₂ mm (10)
Column Sections									
SC150*	37.1	47.4	152	152	7.9	11.9	98.0	11.7	3.0
SC160	41.9	53.4	160	160	8.0	13.0	98.0	15	7.5
SC 150* (BFB Section) is mainly used for railway electrification.									
Heavy Weight Beams / Columns									
HB 150	27.1	34.5	150	150	5.4	9.0	94.0	8.0	4.0
HB 150*	30.6	39.0	150	150	8.4	9.0	94.0	8.0	4.0
HB 150*	34.6	44.1	150	150	11.8	9.0	94.0	8.0	4.0
HB 200	37.3	47.5	200	200	6.1	9.0	94.0	9.0	4.5
HB 200*	40.0	50.9	200	200	7.8	9.0	94.0		

H-Beam IS HB IS SC as per 2062

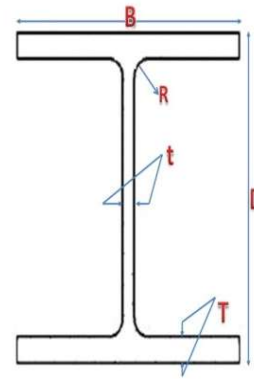
These heavier sections in each size are obtained from the same set of rolls as the spreading of the rolls. the width of flanges of these sections gets increased by an difference between the thicknesses of the webs. Therefore, while ordering these h should be mentioned. Note: HB sections are also used as a column section.





U-Beam as per IS 2062

Designation (1)	Mass M kg/m (2)	Area, a cm ² (3)	Dimensions						
			D	B	t	T	Flange Slope, Max α deg (8)	R1	R2
			mm	mm	mm	mm		mm	mm
UB 254	31	39.6	254	146	6	8.6	90	7.6	-
UB 254	37	47.3	254	146	6.3	10.6	90	7.6	-
UB 305	40	51.0	305	165	6	10.2	90	8.9	-
UB 305	46	58.7	305	165	6.7	11.8	90	8.9	-

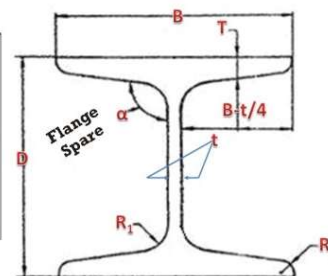


U-Beam
as per IS 2062

W Beam as per 2062 (IS 808)

Designation (1)	Mass M kg/m (2)	Area, a cm ² (3)	Dimensions						
			D	B	t	T	Flange Slope, Max α deg (8)	R1	R2
			mm	mm	mm	mm		mm	mm
WB 200*	52.0	66.5	203	152	8.9	16.5	98.0	15.5	7.6

WB 200* (RSJ Section) Mainly used for railway electrification.



W-Beam
as per IS 2062 (IS 808)



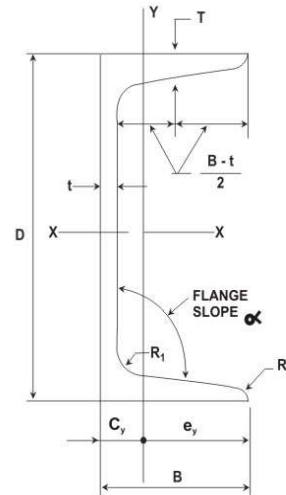
Channels ISMC as per 2062 (IS 808)

Designation (1)	Mass M Kg/m (2)	Sectional area, a Cm ² (3)	Dimensions						
			D	B	t	T	Flange Slope or α deg (8)	R	R ₂
			mm (4)	mm (5)	mm (6)	mm (7)		mm (9)	mm (10)
MC-125	13.1	16.7	125	65	5.3	8.2	96	9.5	2.4
MC-125*	13.7	17.5	125	66	6.0	8.1	96	9.5	2.4
MC-150	16.8	21.3	150	75	5.7	9.0	96	10.0	2.4
MC-200	22.3	28.5	200	75	6.2	11.4	96	11.0	3.2
MC-250	30.6	39.0	250	80	7.2	14.1	96	12.0	3.2
MC-250*	34.2	43.5	250	82	9.0	14.1	96	12.0	3.2
MC-300	36.3	46.3	300	90	7.8	13.6	96	13.0	3.2
MC-400	50.1	63.8	400	100	8.8	15.3	96	15.0	4.8

*The heavier sections in each size intended for use in wagon industry are to be obtained from same set of rolls as the corresponding lightest section in that size group, by raising the rolls.

Light Weight Channels

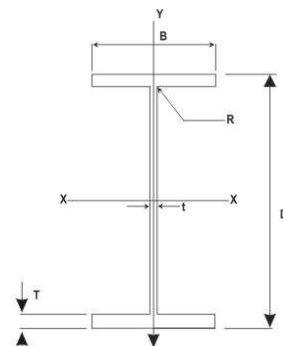
LC-200	20.6	26.3	200.0	75.0	5.5	10.8	91.5	8.5	3.2
LC-250	28.0	35.7	250.0	100.0	6.1	1.7	96.0	11.0	3.2



**Channels ISMC
as per IS 808**

Parallel Beam as per IS 12778: 2004

Designation R (1)	mass M Kg/m (2)	Sectional area, a Cm ² (3)	Moment of inertia						
			D	B	t	T	R	x Cm ² (9)	y Cm ² (10)
			mm (4)	mm (5)	mm (6)	mm (7)	mm (8)	mm (9)	mm (10)
NPB 140X 70x	12.9	16.4	140.0	4.7	6.9	7.0	12.9	541	44.9
NPB 200 X 100x	22.4	28.5	200.0	5.6	8.5	12.0	22.4	1943	142.4
NPB 200 X 130x	27.4	34.9	207.0	5.8	8.5	12.0	27.4	2666	334.0
NPB 250 X 150x	34.1	43.4	258.0	6.1	9.2	15.0	34.1	5120.46	478.59
NPB 300 X 150x	42.2	53.8	300.0	7.1	10.7	15.0	42.2	8356.10	603.78

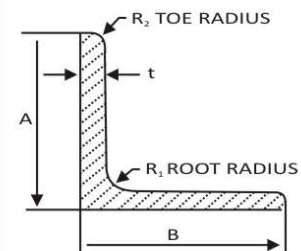


**Parallel Beam as
per IS 12778: 2004**



MS angle as per IS2062 (IS808)

Designation (1)	Mass M Kg/m (2)	Sectional Area, a Cm ² (3)	Dimensions					
			A mm (4)	B mm (5)	t mm (6)	Flang Slop Deg, (7)	R1 mm (8)	R2 mm (9)
A90X90X6	8.20	10.500	90±2	90±2	6	90°	8.5	-
A90X90X8	10.80	13.800	90±2	90±2	8	90°	8.5	-
A90X90X10	13.40	17.000	90±2	90±2	10	90°	8.5	-
A90X90X12	15.80	20.200	90±2	90±2	12	90°	8.5	-
A100X100X6	9.20	11.700	100±2	100±2	6	90°	8.5	-
A100X100X8	12.10	15.400	100±2	100±2	8	90°	8.5	-
A100X100X10	14.90	19.000	100±2	100±2	10	90°	8.5	-
A100X100X12	17.70	22.600	100±2	100±2	12	90°	10	4.8
A110X110X8	13.40	17.100	110±2.2	110±2.2	8	90°	10	4.8
A110X110X10	16.60	21.100	110±2.2	110±2.2	10	90°	10	4.8
A110X110X12	19.70	25.100	110±2.2	110±2.2	12	90°	10	4.8
A110X110X16	25.70	32.800	110±2.2	110±2.2	16	90°	10	4.8
A130X130X8	15.90	20.300	130±2.6	130±2.6	8	90°	10	4.8
A130X130X10	19.70	25.100	130±2.6	130±2.6	10	90°	10	4.8
A130X130X12	23.50	29.900	130±2.6	130±2.6	12	90°	10	4.8
A130X130X16	30.70	39.200	130±2.6	130±2.6	16	90°	10	4.8
A150X150X10	22.90	29.200	150±3	150±3	10	90°	12	4.8
A150X150X12	27.30	34.800	150±3	150±3	12	90°	12	4.8
A150X150X16	35.80	45.600	150±3	150±3	16	90°	12	4.8
A150X150X20	44.10	56.200	150±3	150±3	20	90°	12	4.8
A200X200X12	36.90	46.900	200±4	200±4	12	90°	15	4.8
A200X200X16	48.50	61.800	200±4	200±4	16	90°	15	4.8
A200X200X20	60.00	76.400	200±4	200±4	20	90°	15	4.8
A200X200X25	73.90	94.100	200±4	200±4	25	90°	15	4.8



MS angle as per IS 2062 (IS808)





Mechanical Properties

Grade Designation	Quality	Tensile Strength R_m , Min MPa ¹⁾ (See Note 1)	Yield Stress R_{m1} Min MPa ¹⁾			Percentage Elongation A_1 , Min at Gauge Length, $L_0=5.65$	Internal Bend Diameter Min		Charpy Impact Test (See Note 3)	
			<20	20-40	>40		≤ 25	> 25	Temp °C	Min J
(1)	(2)	(3)	(4)	(5)	(6)	(7)	(8)	(9)	(10)	(11)
E 250	A	410	250	240	230	23	2t	3t	-	-
	BR								RT	27
	BO								0	27
	C								(-) 20	27
E 275	A	430	275	265	255	22	2t	3t	-	-
	BR								RT	27
	BO								0	27
	C								(-) 20	27
E 300	A	440	300	290	280	22	2t	-	-	-
	BR								RT	27
	BO								0	27
	C								(-) 20	27
E 350	A	490	350	330	320	22	2t	-	-	-
	BR								RT	27
	BO								0	27
	C								(-) 20	27
E 410	A	540	410	390	380	20	2t	-	-	-
	BR								RT	25
	BO								0	25
	C								(-) 20	25

NOTES :-

1. In case of product thickness/diameter more than 1000 mm, lower minimum limit of tensile strength may be mutually agreed to between the purchaser and the manufacturer/supplier.
 2. Bend test not required for thickness > 25 mm for grades E 300 to E 650. 't' is the thickness of the test piece.
 3. For sub-quality BR, impact test is optional; if required, at room temperature (25 ± 2°C)
- 1) 1MPa = 1N/mm² = 1MN/m² = 0.102 kgf/mm² = 144.4 psi.

APPROVALS

- ISRO • CORE • MES • EIL • ISO-0012000 • IOCL
- STEEL AUTHORITY OF INDIA LIMITED • BHEL





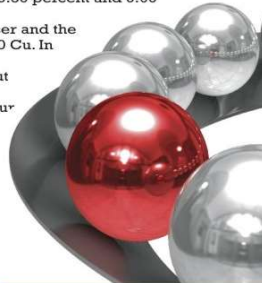
STANDARD AND GRADES

Chemical Composition

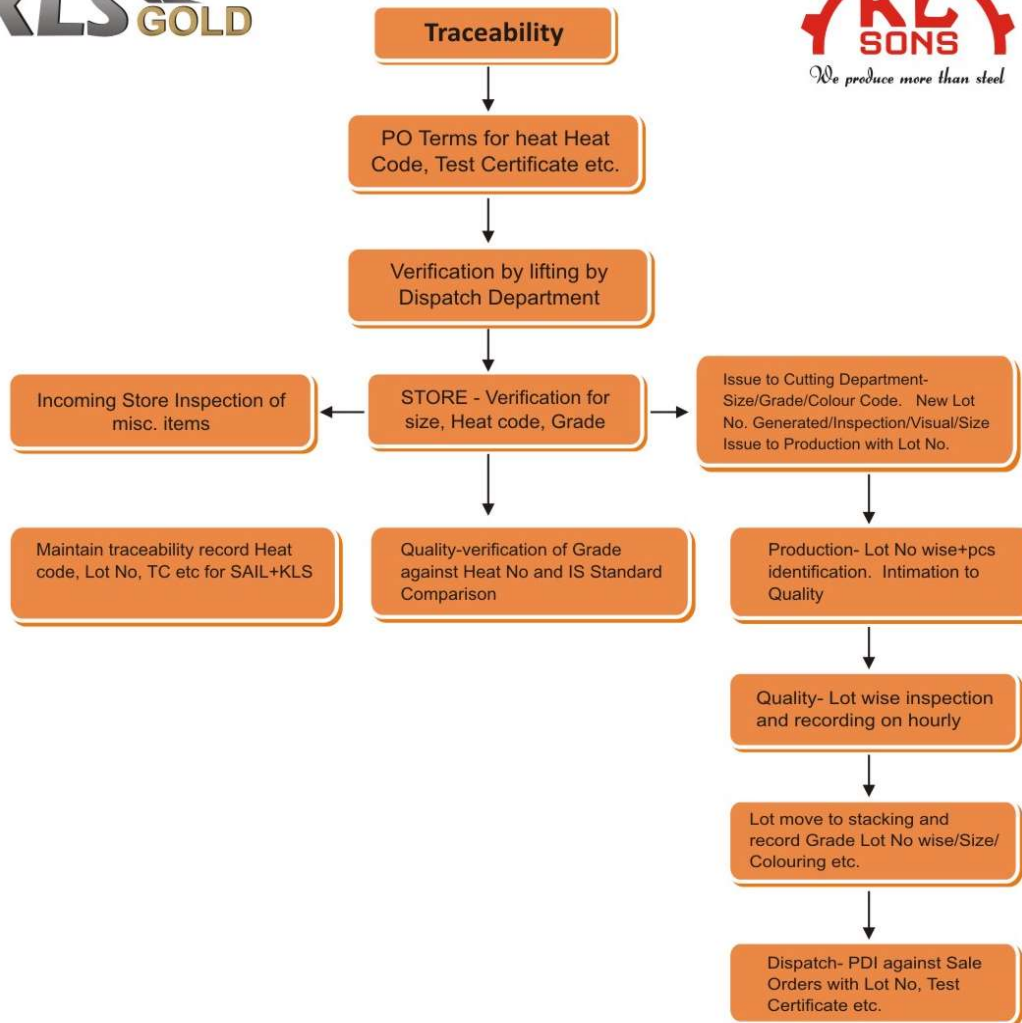
Grade Designation (1)	Quality (2)	Ladle Analysis, Percent, <i>Max</i>					Carbon Equivalent (CE), <i>Max</i> (8)	Mode of Deoxidation (9)
		C (3)	Mn (4)	S (5)	P (6)	Si (7)		
E 250	A	0.23	1.50	0.045	0.045	0.040	0.42	Semi-killed/killed
	BR BO	0.22	1.50	0.045	0.045	0.040	0.41	Semi-killed/killed
	C	0.20	1.50	0.040	0.040	0.040	0.39	killed
E 275	A	0.23	1.50	0.045	0.045	0.040	0.43	Semi-killed/killed
	BR BO	0.22	1.50	0.045	0.045	0.040	0.42	Semi-killed/killed
	C	0.20	1.50	0.040	0.040	0.040	0.41	killed
E 300	A	0.23	1.50	0.045	0.045	0.040	0.44	Semi-killed/killed
	BR BO	0.20	1.50	0.045	0.045	0.045	0.44	Semi-killed/killed
	C	0.20	1.50	0.040	0.040	0.045	0.44	killed
E 350	A	0.23	1.55	0.045	0.045	0.045	0.47	Semi-killed/killed
	BR BO	0.20	1.55	0.045	0.045	0.045	0.47	Semi-killed/killed
	C	0.20	1.55	0.040	0.040	0.045	0.45	killed
E 410	A	0.23	1.60	0.045	0.045	0.045	0.50	Semi-killed/killed
	BR BO	0.20	1.60	0.045	0.045	0.045	0.50	Semi-killed/killed
	C	0.20	1.60	0.040	0.040	0.040	0.50	killed

NOTES :-

1. New grade designation system based on minimum yield stress has been adopted.
2. For semi-killed steel, silicon shall be less than 0.10 percent. For killed steel, when the steel is killed by aluminium alone, the total aluminium content shall not be less than 0.02 percent. When the steel is killed by silicon alone, the silicon content shall not be less than 0.10 percent. When the steel is silicon-aluminium killed, the silicon content shall not be less than 0.03 percent and total aluminium content shall not be less than 0.01 percent.
3. Steels of qualities A, BR, BO and C are generally suitable for welding processes. The weldability increases from quality A to C for grade designation E 250 and E 275
4. Carbon equivalent (CE) would be calculated based on ladle analysis, only. $CE = C + \frac{Mn}{6} + \frac{(Cr + Mo + V)}{5} + \frac{(Ni + Cu)}{15}$
5. Micro-alloying elements like Nb, V and Ti may be added singly or in combination. Total micro-alloying elements shall not be more than 0.25 percent.
6. Alloying elements such as Cr, Ni, Mo and B may be added under agreement between the purchaser and the manufacturer. In case of E 600 and E 650 the limit of Cr and Ni either singly or in combination, shall not exceed 0.50 percent and 0.60 percent respectively.
7. Copper may be present between 0.20 to 0.35 percent as mutually agreed to between the purchaser and the manufacturer. The copper bearing quality shall be designated with a suffix Cu, for example E 250 Cu. In case of product analysis the copper content shall be between 0.17 and 0.38 percent.
8. *Incidental element* - Elements not quoted in table I shall not be intentionally added to steel without the agreement of the purchaser, other than for the purpose of finishing the heat. All reasonable precautions shall be taken to prevent the addition from scrap or other materials used in manufacture of such elements which affect the hardenability, mechanical properties and applicability.
9. Nitrogen content of steel shall not exceed 0.012 percent which shall be ensured by the manufacturer by occasional check analysis.
10. The steel, if required, may be treated with calcium based compound or rare earth element for better formability.
11. Lower limits for carbon equivalent and closer limits for other elements may be mutually agreed to between the purchaser and the manufacturer.



RAW MATERIAL TRACEABILITY



MARKING OF LOT NO. AND SAMPLE NO.



CUTTING AND SLITTING



CHEMICAL TESTING (SPECTRO METER)



FEEDING TO FURNACE



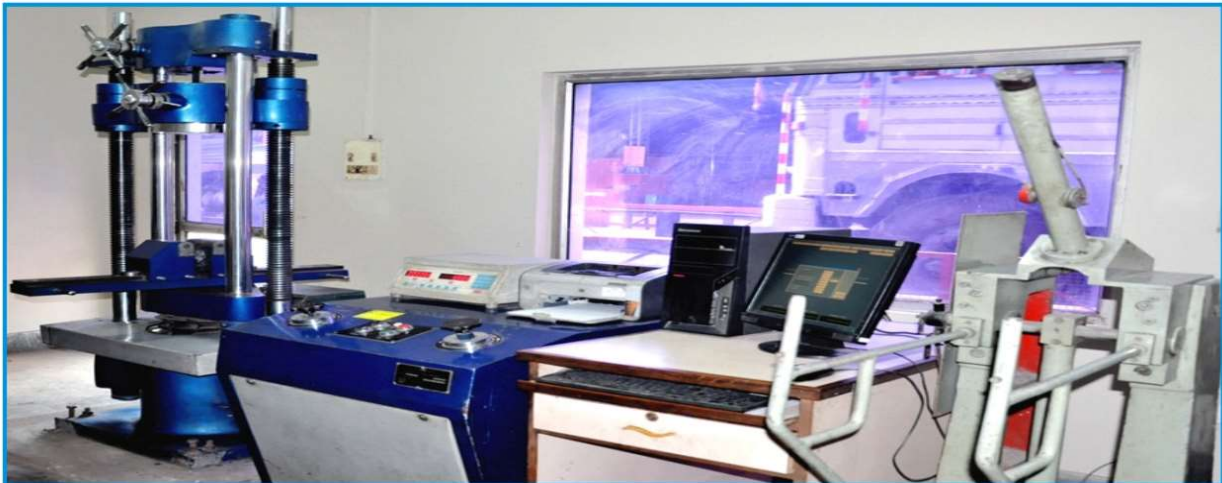
ROLLING PROCESS



FINISHING PRODUCTS WITH SAME LOT



MECHANICAL TESTING (UNIVERSAL TESTING MACHINE)



FINAL PRODUCT READY TO DELIVERY



READY TO DELIVERY





Confusion is better than stupid conclusions.

In confusion, there is still a possibility.

In stupid conclusion,

there is no possibility.





CONTACT DETAILS OF K.L. STEELS PVT. LTD.

LIST OF TELEPHONE NUMBER

SR.	NAME	Phone No	Mobile No	Mail Id
1.	Managing Director			md@klsons.in
2.	EDP	0120-4198460	9660877880	edp@klsons.in
3.	Quality Head	0120-4198458	9811465264	gm.qa@klsons.in
4.	Gm Finance	0120-4198469	9873370444	gm.finance@klsons.in
5.	Gm Operation	0120-4198407	9871164689	gm.operation@klsons.in
6.	DGM Purchase	0120-4198434	9871344667	dgm.purchase@klsons.in
7.	Market Relation Coordinator	0120-4198480	7291992004	mrc@klsons.in
8.	HR	0120-4198455	9910035409	hr@klsons.in
9.	Manager Taxation	0120-4198435	8447136024	gst@klsons.in
10.	AGM Sales	0120-4198401	9560043689	sales.purvanchal@klsons.in
11.	Manager Sales	0120-4198408	9818212689	sales.haryana@klsons.in
12.	Manager Sales	0120-4198402	9871013014	sales.projects1@klsons.in
13.	Manager Sales	0120-4198415	9810235789	sales.rajasthan@klsons.in
14.	Manager Sales	0120-4198403	8510006525	sales.delhi@klsons.in
15.	Manager Sales	0120-4198475	9821133289	sales.project@klsons.in
16.	Sales Back Office	0120-4198446		sales.backoffice@klsons.in
17.	Manager Logistic & Dispatch	0120-4198410	9810902689	logistic@klsons.in
18.	Manager IT	0120-4198409	9984889998	erp@klsons.in
19.	Manager Legal	0120-4198444	9818824498	legal.kls@klsons.in





Customers

In the past 30 golden years, KL Steels contributed immensely in India's industrial growth. From heavy industries to small manufacturing units and large public sector firms to huge corporations, KL Steels has been serving a variety of industries across the nation through its quality steel products and professional commitments. KL Steels partners in the growth of some of the big brands in India's steel industry, prominent among these valued customer are...





KLS GOLD



K.L. STEELS PRIVATE LIMITED

CONTACT US : 0120-4198480 / 7291992004, TOLL FREE NO. : 180010375

MAIL ID : mrc@klsons.in WEBSITE : klsteels.in

f : klsteelsprivatelimited